




How to link your FIDO token with your xIDENTITY (EU-Identity Mobile)

- 1 Log in to a device with a USB interface (laptop, computer, etc.) with your xIDENTITY in your A-Trust account (<https://www.a-trust.at/konto/>) and click on "Link a Fido-Token" on the left-hand side.

 Overview

Self-Service Functions

 Link a Fido-Token 

- 2 Log in via the interface as usual with your user name or telephone number and signature password and follow the instructions on the website.



username/mobile phone number:

Signature password:

Use signature card

Identify

 [Separate window](#)

[Wrong password?](#)

- 3 Confirm that you are in sole possession and control of the FIDO security key.



To use a FIDO token, please confirm that you are in sole possession and sole control of it.

- I confirm that I have sole possession and sole control of the FIDO security key.

[Separate window](#)

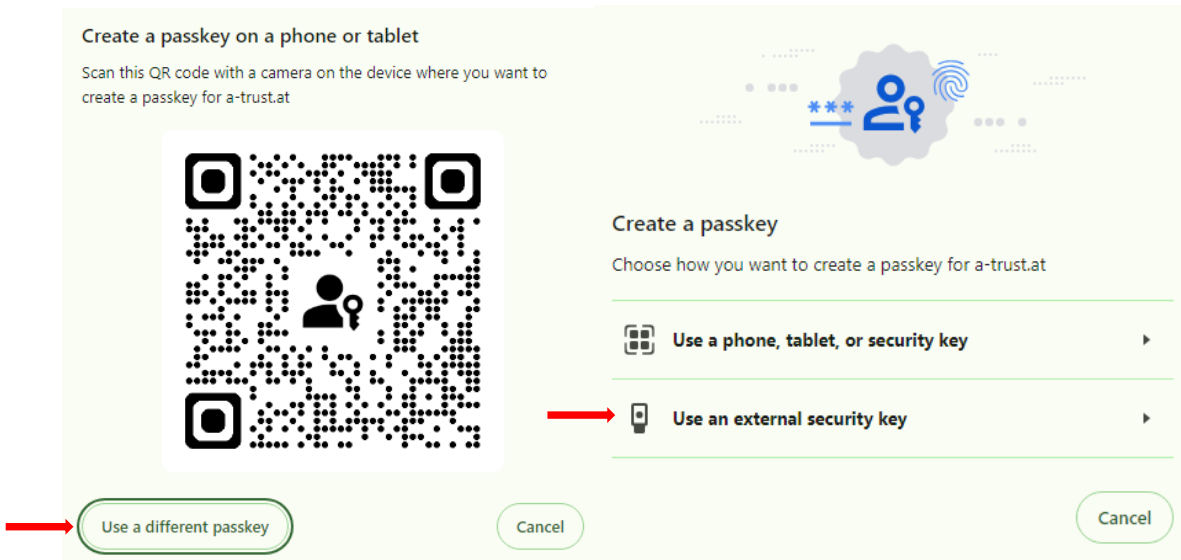
Confirm and continue

- 4 Connect your security key to the computer as soon as you are prompted to do so. To do this, plug your FIDO token into your device. If you have already carried out the general setup of the FIDO token and have already assigned a PIN, points 4a-4b will be skipped and you can continue reading at point 5.

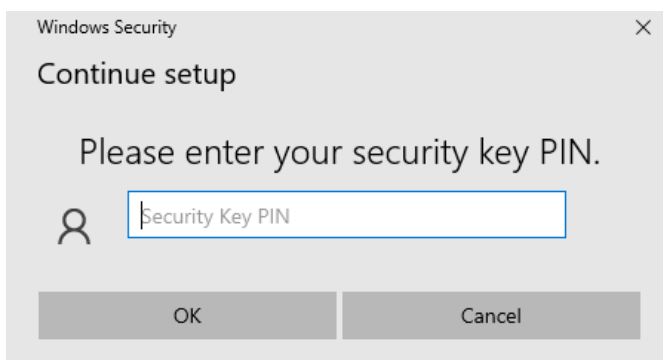
4a. Setup FIDO token: The FIDO token will now automatically connect to your computer (message: "Device is ready for use") and the setup for setting up your FIDO token will also start automatically shortly afterwards.

4b. To activate the token, follow the instructions on your device and select a PIN. You will then be asked to enter the PIN again. To complete the setup, you will be asked to touch your FIDO token.

- 5 Click on "Next" in the web browser and follow the instructions. In some browsers (e.g. Chrome, Edge), a QR code will now open in an extra window, click on "Select another device" and select "External security key". In other browsers, the "Set up security key" window opens directly and step 5 is skipped.



- 6 A "Set up security key" window will open (or without an intermediate step via QR code) - click OK here and then also click OK under "Continue setup". Then enter your PIN (set when activating your FIDO token) and touch your FIDO token



Congratulations! Your FIDO token has been successfully linked.

By the way: In your A-Trust account, you can also manage all linked devices, change your signature password or sign documents quickly and easily.

Note: In rare cases, error messages may appear due to certain settings of the web browser used. If problems occur, we therefore recommend that you try the link again in another browser (e.g. Chrome or Edge).